



RURAL BUSINESSES BENEFIT FROM LIVE LOCAL INW

READ ALL ABOUT IT BELOW >>>

Innovation grant builds on Live Local Palouse

Recent Live Local project push features Palouse-area businesses and reaches two new Eastern Washington sub-markets

On May 31st SIMBA members, leaders, volunteers and a team of 34 talented community contractors completed a sprint to bring nearly a million dollars of new resources to small businesses throughout the Inland Northwest. While the wins from this effort were many, the work to make it all possible started long before the Commerce Department Innovation Fund project formally began on Feb. 22. Read on to learn how the positive impact of the campaign is continuing to pay dividends to under-served entrepreneurs across Eastern Washington today.



"I'm glad I met SIMBA a few years ago when they did Live Local Palouse. I see opportunity for collaboration among small businesses across the Inland Northwest, and am thankful for the resources, support, connections and business opportunities this organization provides."

Frank Contreras, Venezuelan CEO and Founder of Delivery Pullman

SIMBA and coalition partners were able to:

- Distribute a total re-grant budget of \$250,000 to businesses and organizations to benefit nearly 60 regional entities
 - 70% of businesses were BIPOC owned
- Doubled business participants in Live Local campaign from under 800 to over 1600
- Tripled the number of participating businesses in the [Palouse](#) region
- Added businesses from 15 new towns and cities not previously represented throughout [Central](#) and [NE Washington](#)



Click pic to watch 30 sec video!

We launched our [Local Frequency loyalty rewards payment app pilot](#), created an e-pay protocol for eligible businesses to expand access to rural markets, and built a new website (launching in September) with new features and faster load speeds to better serve rural areas.

Delivery Pullman Hosts SIMBA at the Lentil Festival

Join new SIMBA (Live Local) Outreach and Operations Director Robin Haynes and other SIMBA team members for a day of adventure, networking, and sunshine on Saturday the 19th!

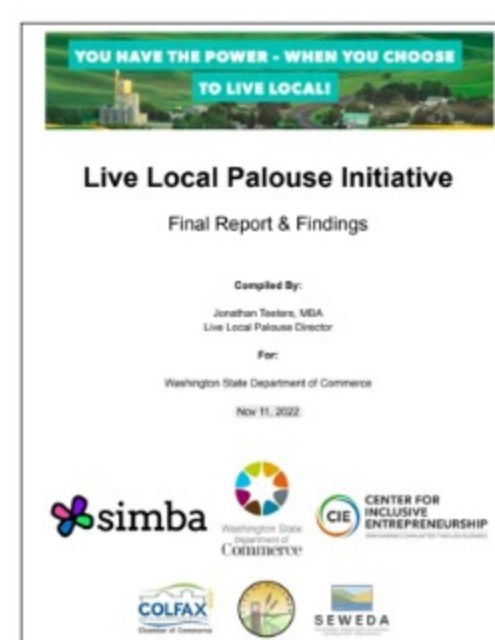


Live Local INW will be hosting a table at the Lentil Festival, thanks to the generosity of Pullman Deliveries. We'd love if you'd join us to share information about Live Local, SIMBA, and our great programs, as well as to hand out merchandise, and answer questions. We'll be leaving Spokane around 11:00 a.m. for setup before 1:00 p.m. on August 19, 2023. We will be at the table from 1:00 - the evening, then tearing down and heading home. Please click the "Email to Sign-up Here" link below and let us know when/if you can volunteer. No prior experience is required. Carpooling is available from Spokane and back.

[Email to Sign-up Here](#)

Live Local Palouse Findings Published on SIMBA's website

The mission of the [Live Local Palouse Initiative](#) is to collaborate with small businesses and microenterprises throughout Whitman, Garfield and Asotin Counties to explore the needs for additional small business resource infrastructure - toward the aims of building a more equitable, resilient, and sustainable local economy across the Palouse region.



Special emphasis was given to emerging entrepreneurs with limited resources, locally-owned and independent, COVID impacted, multi-ethnic, and women and veteran-owned businesses. Four Town Hall events were organized, and in-person and online surveys were collected and themed along with the results from dozens of key leader interviews. Our Inland Northwest home is strongest when small businesses can collaborate across our region's urban and rural sub-markets. We are thankful for the community's growing support of our Live Local INW campaign that makes these strategic collaborations possible.

[Read Our Palouse Report](#)

Meet Our Members

One benefit of being a SIMBA member is that we introduce your business to the wider community.

Strengthening Member Spotlight: RANGE Media

RANGE is to media what SIMBA is to economic development. RANGE is a worker-owned cooperative that is building an anti-racist, equity-minded, class-focused newsroom striving to spotlight the perspectives and expertise of members of marginalized communities, from the ground up.

